

\$65,500 - 165 Northbend Drive, Wetaskiwin

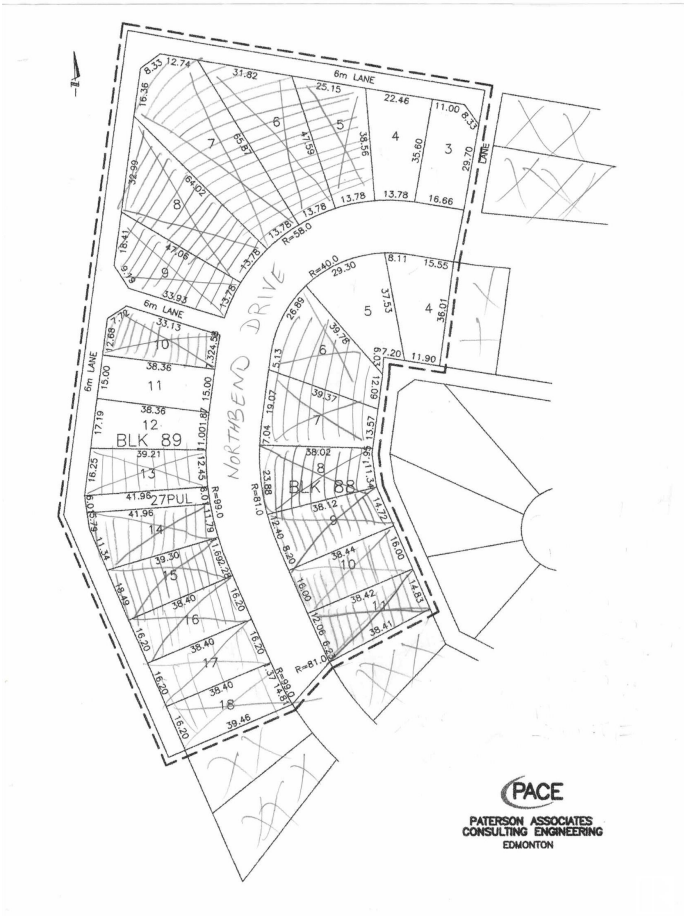
MLS® #E4325233

\$65,500

0 Bedroom, 0.00 Bathroom,
Single Family on 0.00 Acres

Northmount (Wetaskiwin), Wetaskiwin, AB

WOW, compare the price of this lot with other lots in this very well-planned subdivision! Build your new home in this quite well-established neighborhood or keep the lot as an investment. Beautiful neighborhood and you will love this quiet and perfect neighborhood. Within walking distance to Wetaskiwin Hospital and the new Alzheimer Centre point west; good access to downtown and highway; perfect location, backing onto green space; steps to access the vast walking and biking trail system in Wetaskiwin.



Essential Information

MLS® #	E4325233
Price	\$65,500
Bathrooms	0.00
Acres	0.00
Type	Single Family
Sub-Type	Vacant Lot/Land
Status	Active

Community Information

Address	165 Northbend Drive
Area	Wetaskiwin
Subdivision	Northmount (Wetaskiwin)
City	Wetaskiwin
County	ALBERTA

Province	AB
Postal Code	T9A 3N6

Exterior

Exterior Features Back Lane, Flat Site, Golf Nearby

Additional Information

Date Listed January 23rd, 2023

Days on Market 826

Zoning Zone 80

DATA IS DEEMED RELIABLE BUT IS NOT GUARANTEED ACCURATE BY THE REALTORS® ASSOCIATION OF EDMONTON. COPYRIGHT 2025 BY THE REALTORS® ASSOCIATION OF EDMONTON. ALL RIGHTS RESERVED.Trademarks are owned or controlled by the Canadian Real Estate Association (CREA) and identify real estate professionals who are members of CREA (REALTOR®, REALTORS®) and/or the quality of services they provide (MLS®, Multiple Listing Service®)

Listing information last updated on April 28th, 2025 at 11:32am MDT