

\$0 - 103 310 Commerce Rd N, Spruce Grove

MLS® #E4386690

\$0

0 Bedroom, 0.00 Bathroom,
Industrial on 0.00 Acres

Spruce Grove Industrial, Spruce Grove, AB

Prime industrial/flex opportunity at commerce industrial park, located in the heart of Spruce Grove Industrial along busy Golden Spike Rd (11,000 vpd). 15,000sf +/- of flex space with mezzanine build out available. Ample parking and large marshalling areas. Excellent visibility and exposure. Zoning allows for various office, retail and industrial uses. Zoned M1 - Industrial.

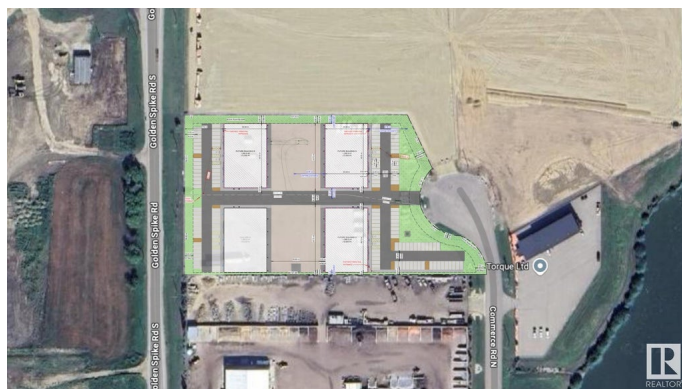
Built in 2024

Essential Information

MLS® #	E4386690
Bathrooms	0.00
Acres	0.00
Year Built	2024
Type	Industrial
Status	Active

Community Information

Address	103 310 Commerce Rd N
Area	Spruce Grove
Subdivision	Spruce Grove Industrial
City	Spruce Grove
County	ALBERTA
Province	AB
Postal Code	T7X 0G6



Exterior

Exterior	Concrete, Tilt-Up
Construction	Concrete, Tilt-Up

Additional Information

Date Listed	May 10th, 2024
Days on Market	354
Zoning	Zone 91

DATA IS DEEMED RELIABLE BUT IS NOT GUARANTEED ACCURATE BY THE REALTORS® ASSOCIATION OF EDMONTON. COPYRIGHT 2025 BY THE REALTORS® ASSOCIATION OF EDMONTON. ALL RIGHTS RESERVED.Trademarks are owned or controlled by the Canadian Real Estate Association (CREA) and identify real estate professionals who are members of CREA (REALTOR®, REALTORS®) and/or the quality of services they provide (MLS®, Multiple Listing Service®)

Listing information last updated on April 29th, 2025 at 12:17am MDT