

\$380,000 - 2536 30 Ave, Edmonton

MLS® #E4419515

\$380,000

3 Bedroom, 1.50 Bathroom, 1,232 sqft

Single Family on 0.00 Acres

Silver Berry, Edmonton, AB

Look no further! This charming two-story half-duplex is situated on a quiet street in Silver Berry. It features three bedrooms, one and a half bathrooms, a double detached garage, and a covered deck. On the main floor, you'll find a spacious living area, a large kitchen, and a dining area. The basement is currently open for development. This two-story half-duplex is located on a quiet street in Silver Berry. It features three bedrooms, one and a half bathrooms, a double detached garage, and a covered deck. On the main floor, you'll find a spacious living area, a large kitchen, and a dining area. The basement is currently open for development and offers the potential for a fourth bedroom. Convenient parking is available in front of the property, and the house backs onto green space. Various amenities are within a short distance. Recent improvements include a hot water tank, stove, over-the-range Microwave, Oven, fridge, and garage door. Additionally, there is a customized closet in the main bedroom.

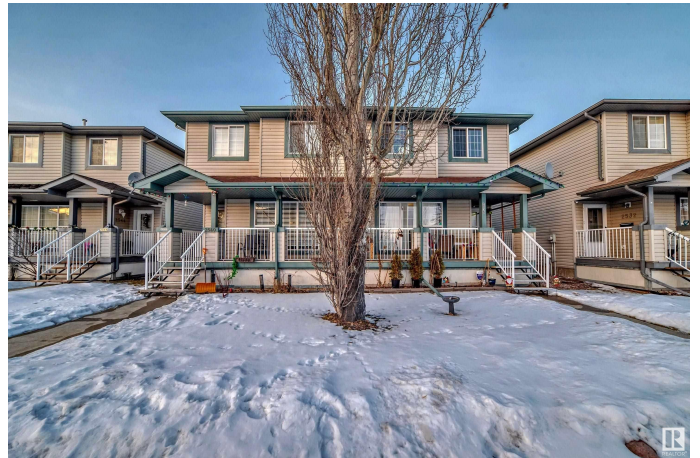
Built in 2004

Essential Information

MLS® # E4419515

Price \$380,000

Bedrooms 3



Bathrooms	1.50
Full Baths	1
Half Baths	1
Square Footage	1,232
Acres	0.00
Year Built	2004
Type	Single Family
Sub-Type	Half Duplex
Style	2 Storey
Status	Active

Community Information

Address	2536 30 Ave
Area	Edmonton
Subdivision	Silver Berry
City	Edmonton
County	ALBERTA
Province	AB
Postal Code	T6T 2A1

Amenities

Amenities	Deck
Parking	Double Garage Detached

Interior

Appliances	Dishwasher-Built-In, Dryer, Refrigerator, Stove-Electric, Washer
Heating	Forced Air-1, Natural Gas
Stories	2
Has Basement	Yes
Basement	Full, Unfinished

Exterior

Exterior	Wood, Vinyl
Exterior Features	Back Lane, Fenced, Flat Site, Landscaped, Playground Nearby, Public Transportation, Schools, Shopping Nearby
Roof	Asphalt Shingles
Construction	Wood, Vinyl
Foundation	Concrete Perimeter

Additional Information

Date Listed January 28th, 2025

Days on Market 90

Zoning Zone 30

DATA IS DEEMED RELIABLE BUT IS NOT GUARANTEED ACCURATE BY THE REALTORS® ASSOCIATION OF EDMONTON. COPYRIGHT 2025 BY THE REALTORS® ASSOCIATION OF EDMONTON. ALL RIGHTS RESERVED. Trademarks are owned or controlled by the Canadian Real Estate Association (CREA) and identify real estate professionals who are members of CREA (REALTOR®, REALTORS®) and/or the quality of services they provide (MLS®, Multiple Listing Service®)

Listing information last updated on April 28th, 2025 at 12:32pm MDT