

\$429,000 - 104 8510 90 Street, Edmonton

MLS® #E4419980

\$429,000

2 Bedroom, 2.00 Bathroom, 864 sqft
Condo / Townhouse on 0.00 Acres

Bonnie Doon, Edmonton, AB

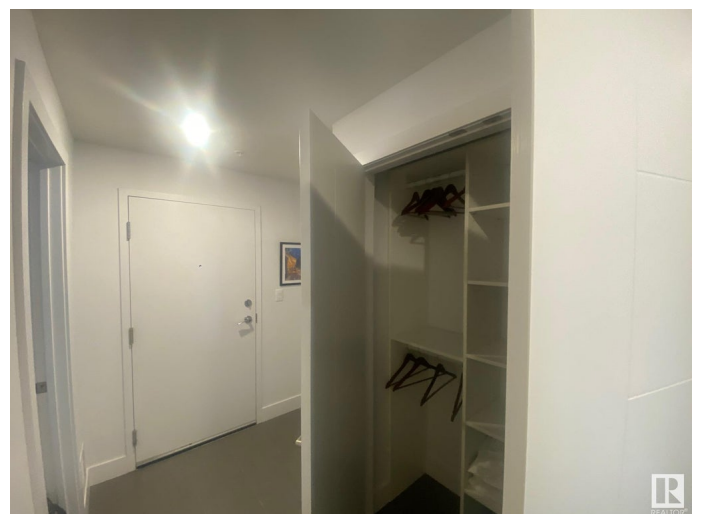
Welcome to Cascade, a luxury concrete and steel condo in Bonnie Doon's French Quarter. This fully furnished 2 bed, 2 bath main-floor end unit offers upscale living with executive furniture and exquisite wall art included. The spacious plan features 450 sq ft outdoor living space with a private entrance, perfect for relaxation. Inside, enjoy a chef's kitchen with quartz countertops, stainless steel appliances, soft-close cabinetry, and an island eating area. The primary bedroom boasts a walk-through closet leading to a spa-like ensuite with dual vanities, a free-standing MAXX tub, and glass shower. Elegant tile flooring, lush carpets, 9-foot ceilings, triple pane windows, central A/C, upgraded closets with organizers, & VIP heated underground parking make this home ideal for stress-free living. Located steps from the Mill Creek Ravine and Whyte Ave, minutes from downtown & dining. Enjoy quiet condo living with superior soundproofing and fireproof construction in one of Edmonton's most sought after areas.

Built in 2018

Essential Information

MLS® # E4419980

Price \$429,000



Bedrooms	2
Bathrooms	2.00
Full Baths	2
Square Footage	864
Acres	0.00
Year Built	2018
Type	Condo / Townhouse
Sub-Type	Lowrise Apartment
Style	Single Level Apartment
Status	Active

Community Information

Address	104 8510 90 Street
Area	Edmonton
Subdivision	Bonnie Doon
City	Edmonton
County	ALBERTA
Province	AB
Postal Code	T6C 3L5

Amenities

Amenities	See Remarks
Parking	Parkade

Interior

Interior Features	ensuite bathroom
Appliances	Air Conditioning-Central, Dishwasher-Built-In, Dryer, Furniture Included, Garage Opener, Microwave Hood Fan, Oven-Built-In, Refrigerator, Stove-Electric, Washer, Window Coverings, See Remarks
Heating	Fan Coil, Natural Gas
# of Stories	5
Stories	1
Has Basement	Yes
Basement	None, No Basement

Exterior

Exterior	Concrete
Exterior Features	See Remarks
Roof	Tar & Gravel

Construction	Concrete
Foundation	Slab

Additional Information

Date Listed	February 1st, 2025
Days on Market	86
Zoning	Zone 18
Condo Fee	\$510

DATA IS DEEMED RELIABLE BUT IS NOT GUARANTEED ACCURATE BY THE REALTORS® ASSOCIATION OF EDMONTON. COPYRIGHT 2025 BY THE REALTORS® ASSOCIATION OF EDMONTON. ALL RIGHTS RESERVED. Trademarks are owned or controlled by the Canadian Real Estate Association (CREA) and identify real estate professionals who are members of CREA (REALTOR®, REALTORS®) and/or the quality of services they provide (MLS®, Multiple Listing Service®)

Listing information last updated on April 28th, 2025 at 11:47am MDT