

\$609,997 - 5123 Kinney Way, Edmonton

MLS® #E4420181

\$609,997

3 Bedroom, 3.00 Bathroom, 2,153 sqft

Single Family on 0.00 Acres

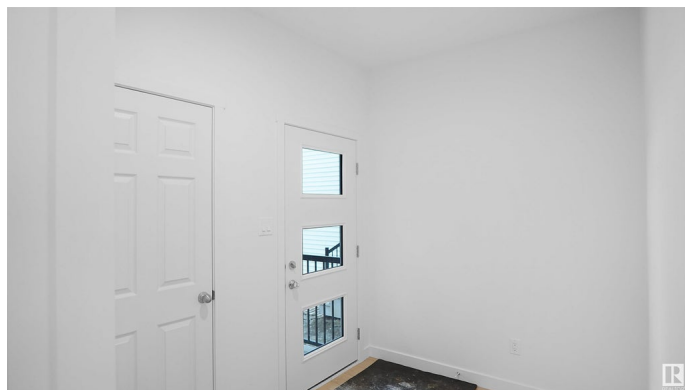
Keswick Area, Edmonton, AB

Welcome to the "Columbia" built by the award winning Pacesetter homes and is located on a quiet street in the heart Keswick Landing. This unique property in Keswick offers nearly 2155 sq ft of living space. The main floor features a large front entrance which has a closed off den next to it which can be used a bedroom/ office if needed and a 3 piece bath, as well as an open kitchen with quartz counters, and a large walkthrough pantry that is leads through to the mudroom and garage. Large windows allow natural light to pour in throughout the house. Upstairs you™ find 3 large bedrooms and a good sized bonus room. This home has a side separate entrance perfect for a future legal suite or nanny suite. This home is now move in ready !

Built in 2024

Essential Information

MLS® #	E4420181
Price	\$609,997
Bedrooms	3
Bathrooms	3.00
Full Baths	3
Square Footage	2,153
Acres	0.00
Year Built	2024



Type	Single Family
Sub-Type	Detached Single Family
Style	2 Storey
Status	Active

Community Information

Address	5123 Kinney Way
Area	Edmonton
Subdivision	Keswick Area
City	Edmonton
County	ALBERTA
Province	AB
Postal Code	T6W 2J2

Amenities

Amenities	See Remarks
Parking	Double Garage Attached

Interior

Interior Features	ensuite bathroom
Appliances	Garage Control, Garage Opener, See Remarks
Heating	Forced Air-1, Natural Gas
Stories	2
Has Basement	Yes
Basement	Full, Unfinished

Exterior

Exterior	Wood, Stone, Vinyl
Exterior Features	Golf Nearby, Park/Reserve, Playground Nearby, Public Swimming Pool, Public Transportation, Schools, Shopping Nearby, See Remarks
Roof	Asphalt Shingles
Construction	Wood, Stone, Vinyl
Foundation	Concrete Perimeter

Additional Information

Date Listed	February 3rd, 2025
Days on Market	69
Zoning	Zone 56

DATA IS DEEMED RELIABLE BUT IS NOT GUARANTEED ACCURATE BY THE REALTORS® ASSOCIATION OF

EDMONTON. COPYRIGHT 2025 BY THE REALTORS® ASSOCIATION OF EDMONTON. ALL RIGHTS RESERVED. Trademarks are owned or controlled by the Canadian Real Estate Association (CREA) and identify real estate professionals who are members of CREA (REALTOR®, REALTORS®) and/or the quality of services they provide (MLS®, Multiple Listing Service®)

Listing information last updated on April 13th, 2025 at 2:17pm MDT