

Courtesy Of John Rota Of Sweetly

\$450,000 - 20 Lindsay Crescent, Spruce Grove

MLS® #E4422020

\$450,000

6 Bedroom, 3.00 Bathroom, 1,321 sqft
Single Family on 0.00 Acres

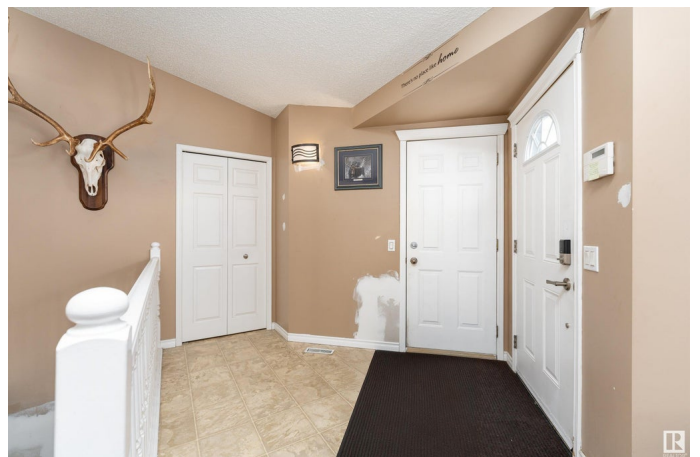
Lakewood_SPGR, Spruce Grove, AB

Welcome to this charming bungalow in Spruce Grove's Lakewood community! Featuring a vaulted ceiling, the main floor feels bright and open, with a cozy living room and a dining area overlooking the fenced, landscaped yard. The kitchen is well-equipped with ample counter space, a double sink, modern stainless steel appliances, and plenty of cabinetry. The primary bedroom offers a walk-in closet and a 3-piece ensuite, while two additional bedrooms, a 4-piece bathroom, and a convenient laundry room complete the main level. The basement expands your living space with a large recreation room featuring a cozy fireplace, a den, three more bedrooms, a 3-piece bathroom, a storage room, and a utility room. An attached double garage adds extra convenience. Situated on a flat site close to parks, schools, and amenities, this home is perfect for families or anyone seeking comfortable, single-level living with extra space.

Built in 1994

Essential Information

MLS® #	E4422020
Price	\$450,000
Bedrooms	6
Bathrooms	3.00



Full Baths	3
Square Footage	1,321
Acres	0.00
Year Built	1994
Type	Single Family
Sub-Type	Detached Single Family
Style	Bungalow
Status	Active

Community Information

Address	20 Lindsay Crescent
Area	Spruce Grove
Subdivision	Lakewood_SPGR
City	Spruce Grove
County	ALBERTA
Province	AB
Postal Code	T7X 3W8

Amenities

Amenities	Deck, Detectors Smoke, Hot Water Natural Gas, Vaulted Ceiling
Parking	Double Garage Attached

Interior

Interior Features	ensuite bathroom
Appliances	Dishwasher-Built-In, Dryer, Garage Control, Garage Opener, Microwave Hood Fan, Refrigerator, Stove-Electric, Vacuum System Attachments, Vacuum Systems, Washer, Window Coverings
Heating	Forced Air-1, Natural Gas
Fireplace	Yes
Fireplaces	Mantel
Stories	2
Has Basement	Yes
Basement	Full, Finished

Exterior

Exterior	Wood, Vinyl
Exterior Features	Fenced, Flat Site, Landscaped, Playground Nearby, Schools, Shopping Nearby
Roof	Asphalt Shingles

Construction Wood, Vinyl
Foundation Concrete Perimeter

Additional Information

Date Listed February 19th, 2025
Days on Market 23
Zoning Zone 91

DATA IS DEEMED RELIABLE BUT IS NOT GUARANTEED ACCURATE BY THE REALTORS® ASSOCIATION OF EDMONTON. COPYRIGHT 2025 BY THE REALTORS® ASSOCIATION OF EDMONTON. ALL RIGHTS RESERVED. Trademarks are owned or controlled by the Canadian Real Estate Association (CREA) and identify real estate professionals who are members of CREA (REALTOR®, REALTORS®) and/or the quality of services they provide (MLS®, Multiple Listing Service®)

Listing information last updated on March 14th, 2025 at 7:02am MDT