

\$339,900 - 120 Westerra Boulevard, Stony Plain

MLS® #E4422058

\$339,900

3 Bedroom, 2.50 Bathroom, 1,413 sqft
Condo / Townhouse on 0.00 Acres

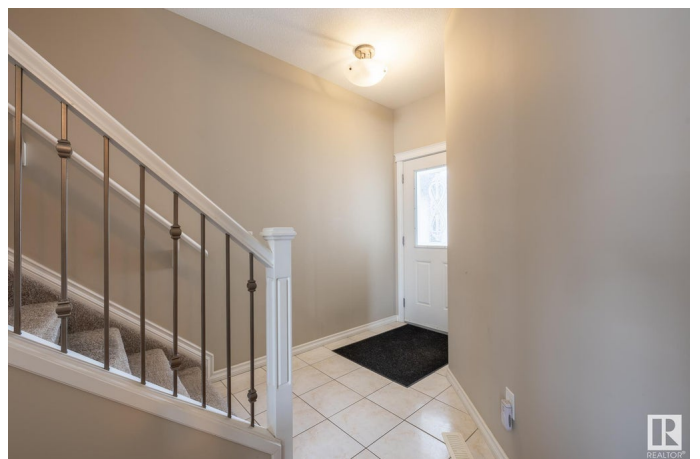
Westerra, Stony Plain, AB

Welcome to this beautiful 1,413 sq. ft. half duplex condominium in the sought-after community of Westerra. This bright and spacious home boasts 3 bedrooms upstairs, including a master suite with vaulted ceilings, his & hers closets, and a private 3-piece ensuite. The two additional bedrooms offer gorgeous park views, making them ideal for family, guests, or a home office. The southwest-facing back deck allows for stunning sunsets and natural light, perfect for relaxing or entertaining. The bright kitchen and dining area create a welcoming space, while the cozy gas fireplace in the living room adds warmth and charm. Enjoy the convenience of a heated double attached garage with additional parking on the driveway. The central AC ensures year-round comfort. With easy access to Spruce Grove and Edmonton, this home offers the perfect blend of peaceful suburban living with urban convenience, all while benefiting from low condo fees, which cover lawn care and snow removal for a truly low-maintenance lifestyle.

Built in 2005

Essential Information

MLS® #	E4422058
Price	\$339,900



Bedrooms	3
Bathrooms	2.50
Full Baths	2
Half Baths	1
Square Footage	1,413
Acres	0.00
Year Built	2005
Type	Condo / Townhouse
Sub-Type	Half Duplex
Style	2 Storey
Status	Active

Community Information

Address	120 Westerra Boulevard
Area	Stony Plain
Subdivision	Westerra
City	Stony Plain
County	ALBERTA
Province	AB
Postal Code	T7Z 2Z7

Amenities

Amenities	Deck, No Animal Home, No Smoking Home
Parking Spaces	2
Parking	Double Garage Attached

Interior

Interior Features	ensuite bathroom
Appliances	Air Conditioning-Central, Dishwasher-Built-In, Dryer, Garage Control, Garage Opener, Microwave Hood Fan, Refrigerator, Stove-Electric, Washer, Window Coverings, Garage Heater
Heating	Forced Air-1, Natural Gas
Fireplace	Yes
Fireplaces	Mantel
Stories	2
Has Basement	Yes
Basement	Full, Unfinished

Exterior

Exterior	Wood, Brick, Vinyl
Exterior Features	Backs Onto Park/Trees, Golf Nearby, Landscaped, No Back Lane, Playground Nearby, Schools
Roof	Asphalt Shingles
Construction	Wood, Brick, Vinyl
Foundation	Concrete Perimeter

Additional Information

Date Listed	February 19th, 2025
Days on Market	23
Zoning	Zone 91
Condo Fee	\$371

DATA IS DEEMED RELIABLE BUT IS NOT GUARANTEED ACCURATE BY THE REALTORS® ASSOCIATION OF EDMONTON. COPYRIGHT 2025 BY THE REALTORS® ASSOCIATION OF EDMONTON. ALL RIGHTS RESERVED. Trademarks are owned or controlled by the Canadian Real Estate Association (CREA) and identify real estate professionals who are members of CREA (REALTOR®, REALTORS®) and/or the quality of services they provide (MLS®, Multiple Listing Service®)

Listing information last updated on March 14th, 2025 at 7:02am MDT