

## \$159,900 - 122 10511 42 Avenue, Edmonton

MLS® #E4423320

**\$159,900**

1 Bedroom, 1.00 Bathroom, 763 sqft

Condo / Townhouse on 0.00 Acres

Rideau Park (Edmonton), Edmonton, AB

Terrific value in this well-maintained one bedroom condo in Rideau Park. This inviting main floor unit has a private patio with lovely views of trees & greenery. A tiled entrance leads to the bright open kitchen with eating bar, newer vinyl plank flooring, an abundance of cabinets & floor to ceiling pantry. Massive combined living/dining room with plenty of space for entertaining. The bedroom is a great size & next to the 4-piece bath with newer plank flooring. Large in-suite storage room with newer stackable washer & dryer & a durable metal shelving system. Condo is wired for security, there's natural gas BBQ hook-up on the patio & 1 titled heated underground parking stall with storage cage. Great location with easy access to transit, Southgate LRT, major roadways, U of A campus & hospital. Walking distance to shops, restaurants & services of Whitemud Crossing & a public library. Southgate mall is blocks away. Building amenities include two social rooms, exercise room & ample visitor parking.

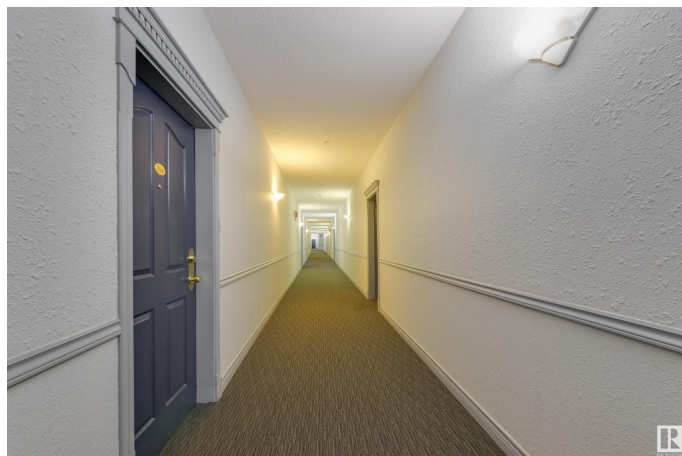
Built in 1998

### Essential Information

MLS® # E4423320

Price \$159,900

Bedrooms 1



Bathrooms	1.00
Full Baths	1
Square Footage	763
Acres	0.00
Year Built	1998
Type	Condo / Townhouse
Sub-Type	Lowrise Apartment
Style	Single Level Apartment
Status	Active

### **Community Information**

Address	122 10511 42 Avenue
Area	Edmonton
Subdivision	Rideau Park (Edmonton)
City	Edmonton
County	ALBERTA
Province	AB
Postal Code	T6J 7G8

### **Amenities**

Amenities	Detectors Smoke, Exercise Room, No Smoking Home, Social Rooms, Storage Cage
Parking Spaces	1
Parking	Heated, Underground

### **Interior**

Appliances	Dishwasher-Built-In, Hood Fan, Oven-Microwave, Refrigerator, Stacked Washer/Dryer, Stove-Electric, Window Coverings, See Remarks
Heating	Baseboard, Natural Gas
# of Stories	4
Stories	1
Has Basement	Yes
Basement	None, No Basement

### **Exterior**

Exterior	Wood, Stucco
Exterior Features	Flat Site, Landscaped, Public Transportation, Schools, Shopping Nearby
Roof	Asphalt Shingles
Construction	Wood, Stucco

Foundation                      Concrete Perimeter

**Additional Information**

Date Listed                      February 27th, 2025  
Days on Market                48  
Zoning                              Zone 16  
Condo Fee                        \$497

DATA IS DEEMED RELIABLE BUT IS NOT GUARANTEED ACCURATE BY THE REALTORS® ASSOCIATION OF EDMONTON. COPYRIGHT 2025 BY THE REALTORS® ASSOCIATION OF EDMONTON. ALL RIGHTS RESERVED.Trademarks are owned or controlled by the Canadian Real Estate Association (CREA) and identify real estate professionals who are members of CREA (REALTOR®, REALTORS®) and/or the quality of services they provide (MLS®, Multiple Listing Service®)  
Listing information last updated on April 16th, 2025 at 3:32pm MDT