

\$1,150,000 - 14344 92a Avenue, Edmonton

MLS® #E4425177

\$1,150,000

5 Bedroom, 4.50 Bathroom, 2,312 sqft
Single Family on 0.00 Acres

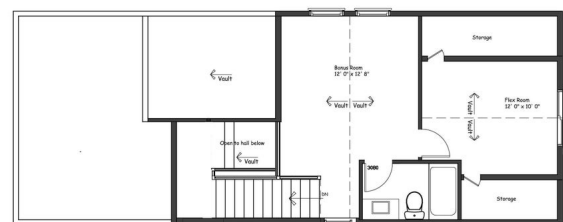
Parkview, Edmonton, AB

Incredible executive home brought to you by Mill Street homes in the heart of the super desirable neighborhood of Parkview which features some of the City's most sought after Elementary and Junior High schools. 4 large bedrooms above grade allows for your growing family with a 5th additional bedroom in your fully finished basement. Gorgeous open concept plan, perfect for entertaining large groups or intimate gatherings!! Upgraded features include wide plank engineered hardwood floors, chef's kitchen with upgraded appliance package and massive quartz island. Luxurious primary suite with spa ensuite and large walk in closet. Home is in planning stages providing a wonderful opportunity to make it your own with customizable choices for fall 2025 completion. Act fast, this home is wider than the conventional 'skinny' home!!

Built in 2025

Essential Information

| | |
|----------------|-------------|
| MLS® # | E4425177 |
| Price | \$1,150,000 |
| Bedrooms | 5 |
| Bathrooms | 4.50 |
| Full Baths | 4 |
| Half Baths | 1 |
| Square Footage | 2,312 |



Loft



Main Floor

E&OE - plans may vary

| | |
|------------|------------------------|
| Acres | 0.00 |
| Year Built | 2025 |
| Type | Single Family |
| Sub-Type | Detached Single Family |
| Style | 3 Storey |
| Status | Active |

Community Information

| | |
|-------------|------------------|
| Address | 14344 92a Avenue |
| Area | Edmonton |
| Subdivision | Parkview |
| City | Edmonton |
| County | ALBERTA |
| Province | AB |
| Postal Code | T5R 5E4 |

Amenities

| | |
|-----------|------------------------|
| Amenities | See Remarks |
| Parking | Double Garage Detached |

Interior

| | |
|-------------------|---------------------------|
| Interior Features | ensuite bathroom |
| Appliances | Builder Appliance Credit |
| Heating | Forced Air-1, Natural Gas |
| Stories | 4 |
| Has Basement | Yes |
| Basement | Full, Finished |

Exterior

| | |
|-------------------|---|
| Exterior | Wood, Composition, Hardie Board Siding, Metal |
| Exterior Features | See Remarks |
| Roof | Asphalt Shingles |
| Construction | Wood, Composition, Hardie Board Siding, Metal |
| Foundation | Concrete Perimeter |

Additional Information

| | |
|----------------|------------------|
| Date Listed | March 11th, 2025 |
| Days on Market | 28 |
| Zoning | Zone 10 |

DATA IS DEEMED RELIABLE BUT IS NOT GUARANTEED ACCURATE BY THE REALTORS® ASSOCIATION OF EDMONTON. COPYRIGHT 2025 BY THE REALTORS® ASSOCIATION OF EDMONTON. ALL RIGHTS RESERVED. Trademarks are owned or controlled by the Canadian Real Estate Association (CREA) and identify real estate professionals who are members of CREA (REALTOR®, REALTORS®) and/or the quality of services they provide (MLS®, Multiple Listing Service®)

Listing information last updated on April 8th, 2025 at 7:17pm MDT