

\$349,000 - 11342 101 Street, Edmonton

MLS® #E4425293

\$349,000

4 Bedroom, 2.00 Bathroom, 1,076 sqft
Single Family on 0.00 Acres

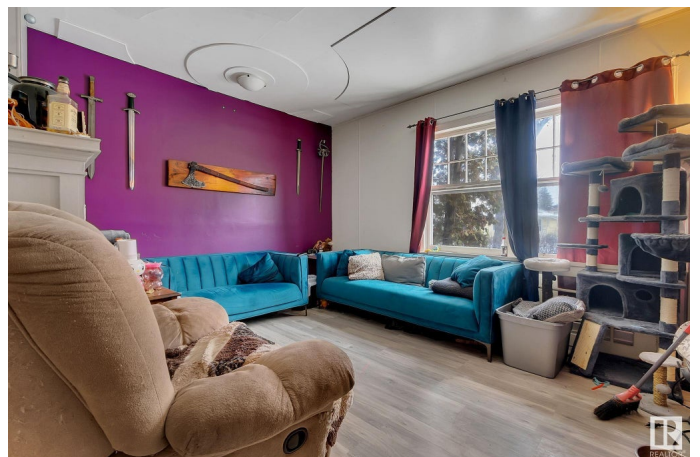
Spruce Avenue, Edmonton, AB

Attention investors! This historic home was originally built in 1930 and sits on a large 50' x 150' lot zoned RS. The neighbouring home, on another 50'x150' lot is also listed for sale. Conveniently located near Downtown, NAIT, Kingsway & Royal Alexandra Hospital. Public transit is readily available just steps from the front door. The Bungalow home offers over 1000 square feet of living space above grade plus a fully finished basement. There are 4 bedrooms, 2 full bathrooms & 2 kitchens along with living room spaces on each level. The opportunities are endless!

Built in 1930

Essential Information

MLS® #	E4425293
Price	\$349,000
Bedrooms	4
Bathrooms	2.00
Full Baths	2
Square Footage	1,076
Acres	0.00
Year Built	1930
Type	Single Family
Sub-Type	Detached Single Family
Style	Bungalow
Status	Active



Community Information

Address	11342 101 Street
Area	Edmonton
Subdivision	Spruce Avenue
City	Edmonton
County	ALBERTA
Province	AB
Postal Code	T5G 2A7

Amenities

Amenities	Off Street Parking, Deck
Parking	Rear Drive Access

Interior

Appliances	Dryer, Hood Fan, Refrigerator, Stove-Electric, Washer
Heating	Forced Air-1, Natural Gas
Stories	2
Has Basement	Yes
Basement	Full, Finished

Exterior

Exterior	Wood, Stucco
Exterior Features	Back Lane, Fenced, Flat Site, Landscaped, Playground Nearby, Public Transportation, Schools, Shopping Nearby, Subdividable Lot
Roof	Asphalt Shingles
Construction	Wood, Stucco
Foundation	Concrete Perimeter

Additional Information

Date Listed	March 12th, 2025
Days on Market	1
Zoning	Zone 08

DATA IS DEEMED RELIABLE BUT IS NOT GUARANTEED ACCURATE BY THE REALTORS® ASSOCIATION OF EDMONTON. COPYRIGHT 2025 BY THE REALTORS® ASSOCIATION OF EDMONTON. ALL RIGHTS RESERVED. Trademarks are owned or controlled by the Canadian Real Estate Association (CREA) and identify real estate professionals who are members of CREA (REALTOR®, REALTORS®) and/or the quality of services they provide (MLS®, Multiple Listing Service®)

Listing information last updated on March 13th, 2025 at 6:32pm MDT