

Courtesy Of Benita E Pashko Of RE/MAX Elite

## **\$429,900 - 8803 152b Avenue, Edmonton**

MLS® #E4425980

**\$429,900**

3 Bedroom, 2.00 Bathroom, 998 sqft

Single Family on 0.00 Acres

Evansdale, Edmonton, AB

**TIMELESS CHARACTER MEETS MODERN FUNCTIONALITY IN EVANSDALE!!! This EXTENSIVELY RENOVATED 3 bedroom family home is waiting for you to call it "Home"!**

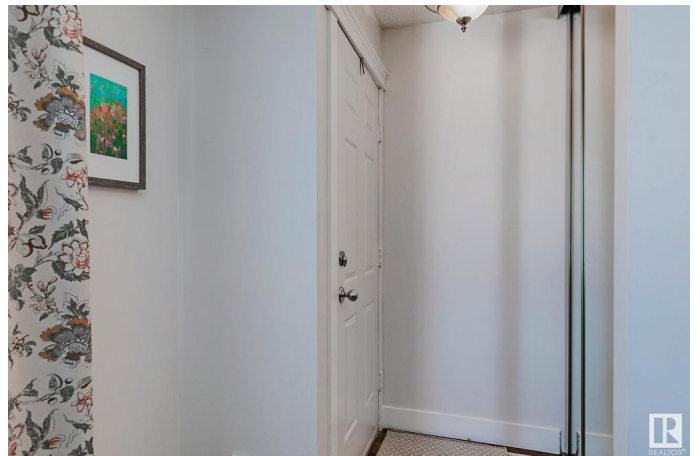
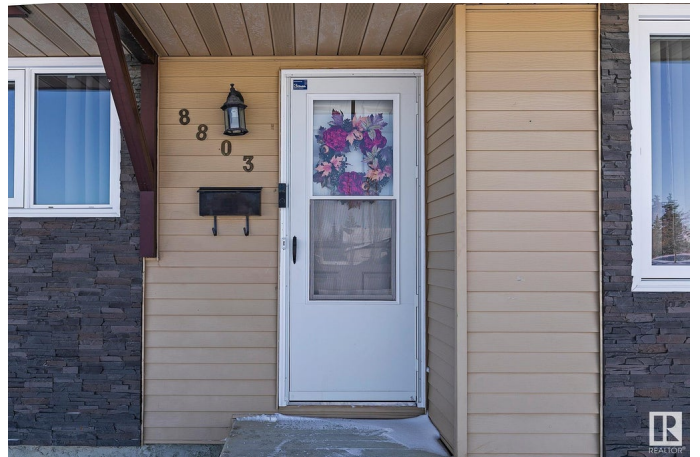
The **STUNNING NEW KITCHEN** boasts cabinets to the ceiling, newer **STAINLESS STEEL** appliances & **NEW FLOORING THROUGHOUT**. The 4pc bath on the main level has been **FULLY RENOVATED**. There's a lovely gas fireplace in the living room! In your **FULLY FINISHED BASEMENT**, you will find a full 4pc bathroom, **GAMES AREA**, and a convenient **SECOND KITCHEN**, which is ideal for entertaining! The family room is accented by a cozy, freestanding **GAS FIREPLACE**. This home also has **NEW WINDOWS & SHINGLES!** Patio doors lead to your **NEW DECK!** The yard is fully fenced with **MAINTENANCE FREE** chain link with weave! If the hot weather isn't your cup of tea, come on back inside where it's **FULLY AIR CONDITIONED!** There's a man cave as well!!! (double detached heated garage with 220V wiring). Situated close to schools, shopping and public transportation. Your new chapter begins here!

Built in 1981

### **Essential Information**

MLS® #

E4425980



Price	\$429,900
Bedrooms	3
Bathrooms	2.00
Full Baths	2
Square Footage	998
Acres	0.00
Year Built	1981
Type	Single Family
Sub-Type	Detached Single Family
Style	Bungalow
Status	Active

### **Community Information**

Address	8803 152b Avenue
Area	Edmonton
Subdivision	Evansdale
City	Edmonton
County	ALBERTA
Province	AB
Postal Code	T5E 6G1

### **Amenities**

Amenities	Deck, Detectors Smoke, Hot Water Natural Gas, No Smoking Home, Vinyl Windows
Parking Spaces	4
Parking	220 Volt Wiring, Double Garage Detached, Heated

### **Interior**

Appliances	Air Conditioning-Central, Dishwasher-Built-In, Dryer, Garage Opener, Microwave Hood Fan, Storage Shed, Vacuum System Attachments, Vacuum Systems, Washer, Window Coverings, See Remarks, Refrigerators-Two, Stoves-Two, Garage Heater
Heating	Forced Air-1, Natural Gas
Fireplace	Yes
Fireplaces	Freestanding, Glass Door, Stone Facing
Stories	2
Has Basement	Yes
Basement	Full, Finished

### **Exterior**

Exterior	Wood, Stone, Stucco
Exterior Features	Back Lane, Fenced, Landscaped, Low Maintenance Landscape, Playground Nearby, Public Transportation, Schools
Roof	Asphalt Shingles
Construction	Wood, Stone, Stucco
Foundation	Concrete Perimeter

### **School Information**

Elementary	Evansdale School
Middle	Dickensfield School
High	Queen Elizabeth School

### **Additional Information**

Date Listed	March 16th, 2025
Days on Market	19
Zoning	Zone 02

DATA IS DEEMED RELIABLE BUT IS NOT GUARANTEED ACCURATE BY THE REALTORS® ASSOCIATION OF EDMONTON. COPYRIGHT 2025 BY THE REALTORS® ASSOCIATION OF EDMONTON. ALL RIGHTS RESERVED. Trademarks are owned or controlled by the Canadian Real Estate Association (CREA) and identify real estate professionals who are members of CREA (REALTOR®, REALTORS®) and/or the quality of services they provide (MLS®, Multiple Listing Service®)

Listing information last updated on April 4th, 2025 at 2:02pm MDT