

\$700,000

Windermere, Edmonton, AB

One Of the Last Opportunity In West Point
Windermere (A community Surrounded By
Multi Million Dollar Mansions)... High Visibility
****CORNER LOT**** with over 60+ front Building
Pocket 9637 sq ft Estate Lot.. Close To
School, Shopping, Golf Courses, N-Sask
River, Walking trails ETC..

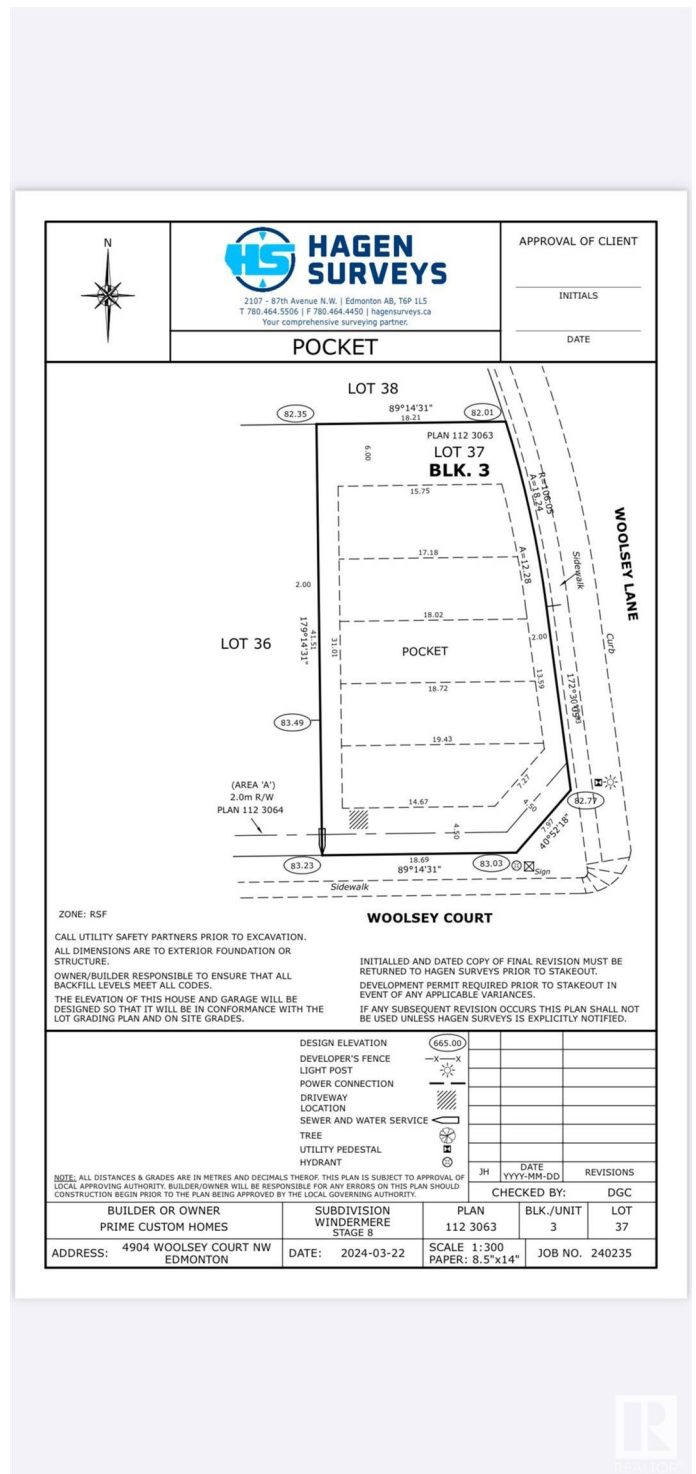
Essential Information

MLS® #	E4427316
Price	\$700,000
Bathrooms	0.00
Acres	0.00
Type	Single Family
Sub-Type	Vacant Lot/Land
Status	Active

Community Information

Address	4904 Woolsey Court
Area	Edmonton
Subdivision	Windermere
City	Edmonton
County	ALBERTA
Province	AB
Postal Code	T6W 2B9

Exterior



Exterior Features Corner Lot, Cul-De-Sac, Golf Nearby, Playground Nearby, Public Transportation, Schools, Shopping Nearby

Additional Information

Date Listed March 25th, 2025
Days on Market 34
Zoning Zone 56
HOA Fees 525
HOA Fees Freq. Annually

DATA IS DEEMED RELIABLE BUT IS NOT GUARANTEED ACCURATE BY THE REALTORS® ASSOCIATION OF EDMONTON. COPYRIGHT 2025 BY THE REALTORS® ASSOCIATION OF EDMONTON. ALL RIGHTS RESERVED.Trademarks are owned or controlled by the Canadian Real Estate Association (CREA) and identify real estate professionals who are members of CREA (REALTOR®, REALTORS®) and/or the quality of services they provide (MLS®, Multiple Listing Service®)
Listing information last updated on April 28th, 2025 at 7:17pm MDT