

\$3,725,000 - W. Side Of 224 Half-mile South Of Yellowhead, Sherwood Park

MLS® #E4427420

\$3,725,000

0 Bedroom, 0.00 Bathroom,
Land Commercial on 0.00 Acres

None, Sherwood Park, AB

- Near New areas of Cambrian and Bremner will reshape this area with massive potential for this site!! - Trunk Lines for Sanitary & Water are Nearby ! - 4 Miles East of Sherwood Park !
- Great for Business/Industrial Site !

Essential Information

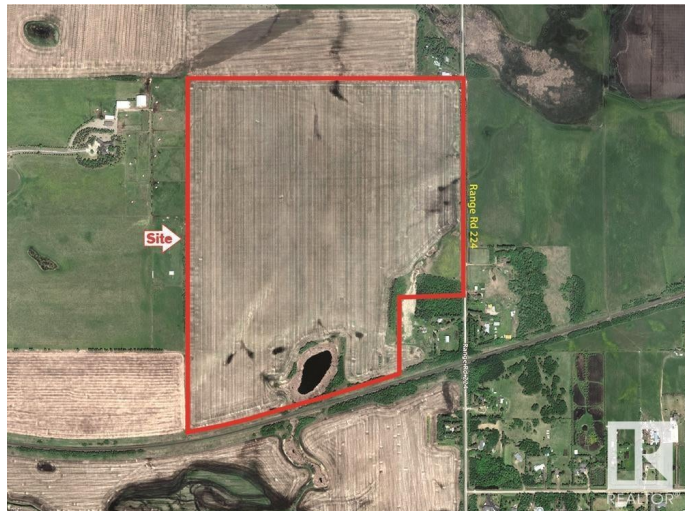
| | |
|-----------|-----------------|
| MLS® # | E4427420 |
| Price | \$3,725,000 |
| Bathrooms | 0.00 |
| Acres | 0.00 |
| Type | Land Commercial |
| Status | Active |

Community Information

| | |
|-------------|--------------------------------|
| Address | W. Side Of 224 Half-mile South |
| Area | Sherwood Park |
| Subdivision | None |
| City | Sherwood Park |
| County | ALBERTA |
| Province | AB |
| Postal Code | T8E 2K4 |

Additional Information

| | |
|----------------|------------------|
| Date Listed | March 24th, 2025 |
| Days on Market | 36 |



Zoning

Zone 25

DATA IS DEEMED RELIABLE BUT IS NOT GUARANTEED ACCURATE BY THE REALTORS® ASSOCIATION OF EDMONTON. COPYRIGHT 2025 BY THE REALTORS® ASSOCIATION OF EDMONTON. ALL RIGHTS RESERVED. Trademarks are owned or controlled by the Canadian Real Estate Association (CREA) and identify real estate professionals who are members of CREA (REALTOR®, REALTORS®) and/or the quality of services they provide (MLS®, Multiple Listing Service®)

Listing information last updated on April 29th, 2025 at 12:17am MDT