

Courtesy Of Tyler J Suchan Of RE/MAX River City

\$220,000 - 11372 139 Avenue, Edmonton

MLS® #E4429067

\$220,000

3 Bedroom, 1.50 Bathroom, 995 sqft
Condo / Townhouse on 0.00 Acres

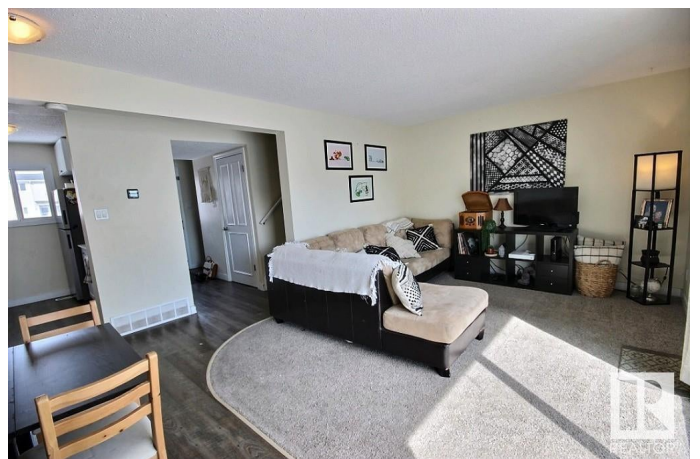
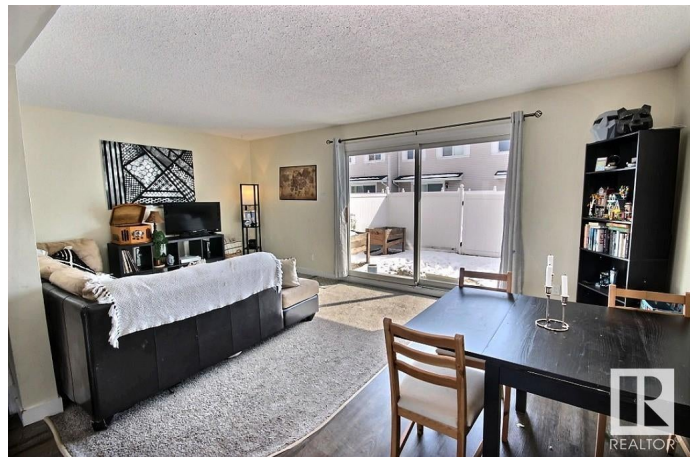
Carlisle, Edmonton, AB

Great Value! 3 bedroom townhouse located in a quite neighborhood with easy access to school, public transit, parks, and shops. This End/Corner unit has a sunny south facing living room with a fully fenced backyard. Upstairs features 3 bedroom and 1 full bathroom. A 2nd half bathroom is on the main floor. Basement has the laundry area and partly finished with a room drywalled and ready for future development. Parking stall at front and ample visitor parking just a few steps away. The current owner rents a 2nd stall directly out front of the unit for \$25/mth. Well managed complex with recent upgrades including newer shingles, windows, vinyl siding, exterior doors and maintenance free fence. Immediate possession is available. Act Now!

Built in 1977

Essential Information

MLS® #	E4429067
Price	\$220,000
Bedrooms	3
Bathrooms	1.50
Full Baths	1
Half Baths	1
Square Footage	995
Acres	0.00



Year Built	1977
Type	Condo / Townhouse
Sub-Type	Townhouse
Style	2 Storey
Status	Active

Community Information

Address	11372 139 Avenue
Area	Edmonton
Subdivision	Carlisle
City	Edmonton
County	ALBERTA
Province	AB
Postal Code	T5X 3L4

Amenities

Amenities	Detectors Smoke, Hot Water Natural Gas, No Smoking Home, Parking-Visitor
Parking	2 Outdoor Stalls, Stall

Interior

Appliances	Dryer, Fan-Ceiling, Hood Fan, Refrigerator, Stove-Electric, Washer
Heating	Forced Air-1, Natural Gas
Stories	2
Has Basement	Yes
Basement	Full, Unfinished

Exterior

Exterior	Wood, Vinyl
Exterior Features	Corner Lot, Fenced, Low Maintenance Landscape, Picnic Area, Playground Nearby, Public Transportation, Schools, Shopping Nearby
Roof	Asphalt Shingles
Construction	Wood, Vinyl
Foundation	Concrete Perimeter

Additional Information

Date Listed	April 4th, 2025
Days on Market	3
Zoning	Zone 27

Condo Fee \$409

DATA IS DEEMED RELIABLE BUT IS NOT GUARANTEED ACCURATE BY THE REALTORS® ASSOCIATION OF EDMONTON. COPYRIGHT 2025 BY THE REALTORS® ASSOCIATION OF EDMONTON. ALL RIGHTS RESERVED. Trademarks are owned or controlled by the Canadian Real Estate Association (CREA) and identify real estate professionals who are members of CREA (REALTOR®, REALTORS®) and/or the quality of services they provide (MLS®, Multiple Listing Service®)

Listing information last updated on April 7th, 2025 at 3:47pm MDT