

Courtesy Of Nooran Ostadeian Of RE/MAX Elite

# \$185,000 - 44 2115 118 Street, Edmonton

MLS® #E4429295

**\$185,000**

2 Bedroom, 1.00 Bathroom, 933 sqft  
Condo / Townhouse on 0.00 Acres

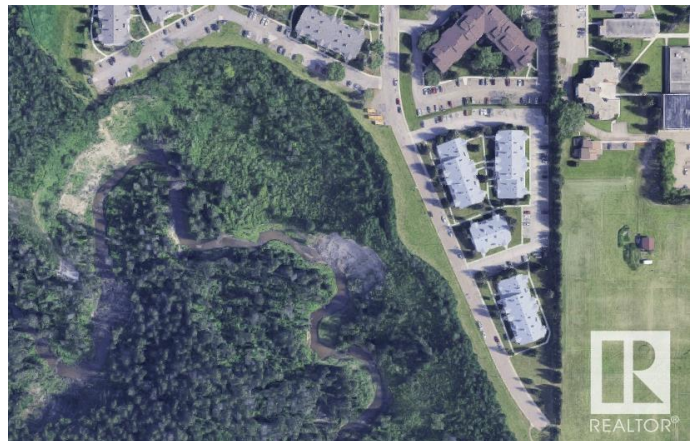
Skyrattler, Edmonton, AB

Welcome to this fully upgraded 2-bedroom, top-floor stacked townhouse located just steps from the scenic Blackmud and Whitemud Creek trails. Enjoy a bright kitchen with a deep walk-in pantry, in-suite laundry, and a spacious layout with two good-sized bedrooms and a large bathroom. This home offers modern updates throughout and practical features like private storage right next to the unit. The condo fee is low and utility usage is under your controlâ€”making it perfect for budget-conscious buyers. Located in a respectful, quiet neighborhood close to LRT, shopping, schools, and top-rated restaurants. Includes one parking stall, plus ample street parking for a second vehicle. Whether you're a first-time buyer, downsizing, or investing, this home offers incredible value in one of Edmontonâ€™s most walkable natural settings. Don't miss this opportunity to live affordably without compromise.

Built in 1982

## Essential Information

MLS® #	E4429295
Price	\$185,000
Bedrooms	2
Bathrooms	1.00
Full Baths	1



Square Footage	933
Acres	0.00
Year Built	1982
Type	Condo / Townhouse
Sub-Type	Stacked Townhouse
Style	Single Level Apartment
Status	Active

### **Community Information**

Address	44 2115 118 Street
Area	Edmonton
Subdivision	Skyrattler
City	Edmonton
County	ALBERTA
Province	AB
Postal Code	T6J 5N1

### **Amenities**

Amenities	Deck, Hot Water Natural Gas, Parking-Plug-Ins, Parking-Visitor, Storage-Locker Room
Parking	Stall

### **Interior**

Appliances	Dishwasher-Built-In, Dryer, Refrigerator, Stove-Electric, Washer, Window Coverings
Heating	Forced Air-1, Natural Gas
Fireplace	Yes
Fireplaces	Double Sided
Stories	1
Has Basement	Yes
Basement	None, No Basement

### **Exterior**

Exterior	Wood, Vinyl
Exterior Features	Airport Nearby, Creek, Cul-De-Sac, Golf Nearby, Park/Reserve, Playground Nearby, Public Transportation, Schools, Shopping Nearby, Ski Hill Nearby
Roof	Asphalt Shingles
Construction	Wood, Vinyl

Foundation Concrete Perimeter

### **School Information**

Elementary Keheewin  
Middle D.S. Mackenzie  
High Harry Ainlay

### **Additional Information**

Date Listed April 5th, 2025  
Days on Market 2  
Zoning Zone 16  
Condo Fee \$321

DATA IS DEEMED RELIABLE BUT IS NOT GUARANTEED ACCURATE BY THE REALTORS® ASSOCIATION OF EDMONTON. COPYRIGHT 2025 BY THE REALTORS® ASSOCIATION OF EDMONTON. ALL RIGHTS RESERVED. Trademarks are owned or controlled by the Canadian Real Estate Association (CREA) and identify real estate professionals who are members of CREA (REALTOR®, REALTORS®) and/or the quality of services they provide (MLS®, Multiple Listing Service®)

Listing information last updated on April 7th, 2025 at 5:17pm MDT