

Courtesy Of Inder Gill Of Initia Real Estate

## \$175,000 - 474 10520 120 Street, Edmonton

MLS® #E4430657

**\$175,000**

2 Bedroom, 2.00 Bathroom, 830 sqft

Condo / Townhouse on 0.00 Acres

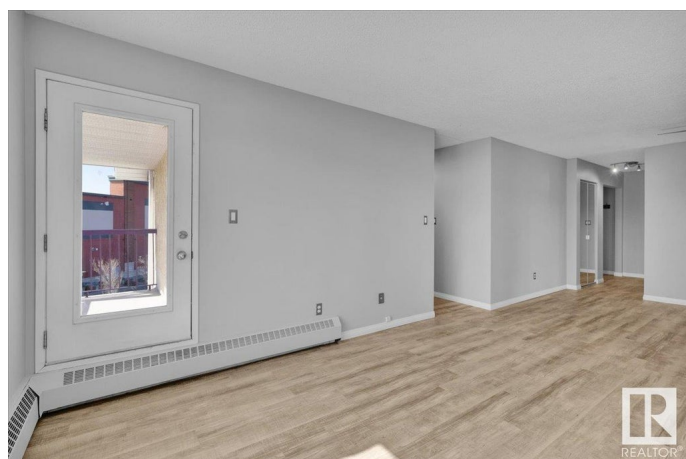
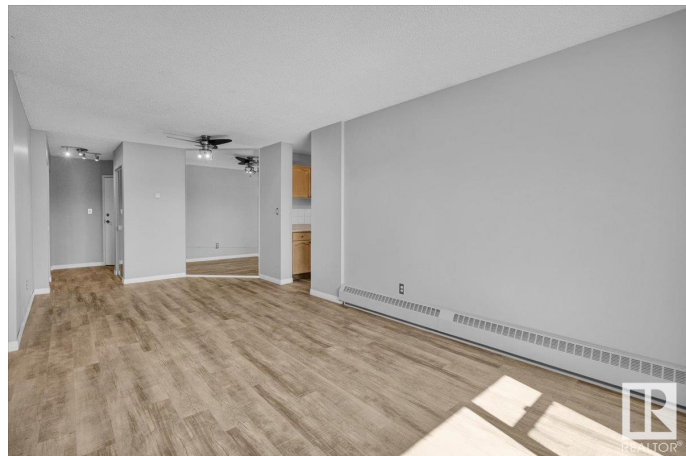
Queen Mary Park, Edmonton, AB

Top-floor 2 bed, 2 bath CORNER unit at The Pointe Uptown with stunning downtown views! This bright, freshly painted home features new flooring throughout, stainless steel appliances, and a smart, open layout filled with natural light. Enjoy the convenience of in-suite laundry, a spacious balcony for summer evenings, and a covered powered parking stall to keep your vehicle protected year-round. Condo fees cover most utilities except power. Just minutes from MacEwan University and Unity Square Centre, with walking trails and a greenbelt right nearby. Unit is move-in ready.

Built in 1994

### Essential Information

MLS® #	E4430657
Price	\$175,000
Bedrooms	2
Bathrooms	2.00
Full Baths	2
Square Footage	830
Acres	0.00
Year Built	1994
Type	Condo / Townhouse
Sub-Type	Lowrise Apartment
Style	Single Level Apartment
Status	Active



## Community Information

Address	474 10520 120 Street
Area	Edmonton
Subdivision	Queen Mary Park
City	Edmonton
County	ALBERTA
Province	AB
Postal Code	T5H 4L9

## Amenities

Amenities	No Animal Home, No Smoking Home, Parking-Visitor
Parking	Stall

## Interior

Interior Features	ensuite bathroom
Appliances	Dishwasher-Built-In, Dryer, Refrigerator, Stove-Electric, Washer
Heating	Baseboard, Natural Gas
# of Stories	4
Stories	1
Has Basement	Yes
Basement	None, No Basement

## Exterior

Exterior	Wood, Stucco
Exterior Features	Backs Onto Park/Trees, Corner Lot, Fenced, Landscaped, Playground Nearby, Public Swimming Pool, Public Transportation, Schools, Shopping Nearby, Ski Hill Nearby, View Downtown
Roof	Asphalt Shingles
Construction	Wood, Stucco
Foundation	Concrete Perimeter

## Additional Information

Date Listed	April 12th, 2025
Days on Market	8
Zoning	Zone 08
Condo Fee	\$418

DATA IS DEEMED RELIABLE BUT IS NOT GUARANTEED ACCURATE BY THE REALTORS® ASSOCIATION OF EDMONTON. COPYRIGHT 2025 BY THE REALTORS® ASSOCIATION OF EDMONTON. ALL RIGHTS RESERVED. Trademarks are owned or controlled by the Canadian Real Estate Association (CREA) and identify real estate professionals who are members of CREA (REALTOR®, REALTORS®) and/or the quality of services they

provide (MLS® , Multiple Listing Service®)

Listing information last updated on April 20th, 2025 at 2:47am MDT