

## \$2,295 - 556 35 Street, Edmonton

---

MLS® #E4431200

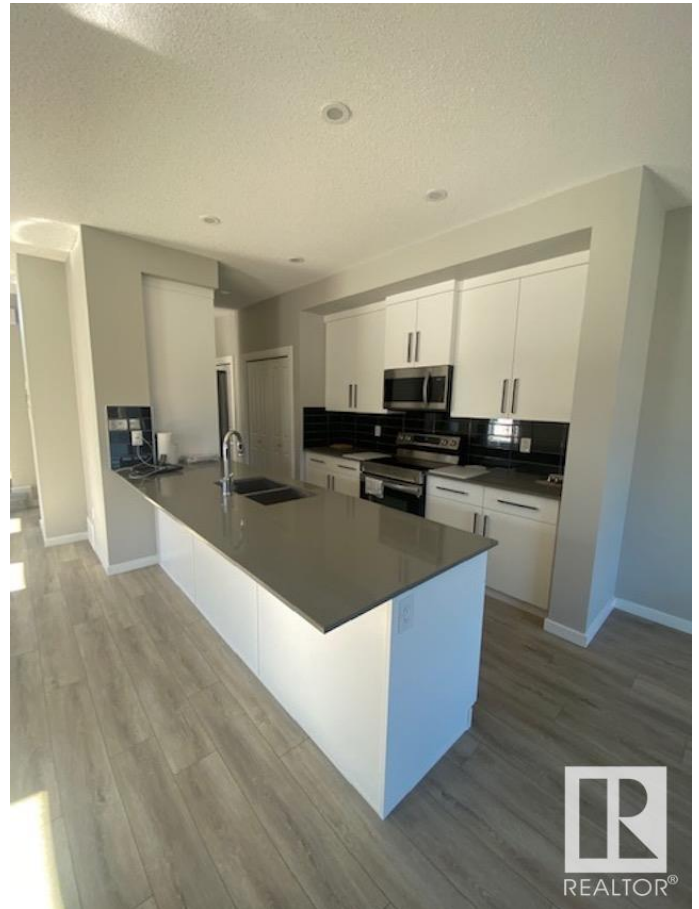
**\$2,295**

3 Bedroom, 2.50 Bathroom, 1,604 sqft

Rental on 0.00 Acres

Charlesworth, Edmonton, AB

Welcome home to your 1600 sqft house in the desirable neighborhood of Charlesworth. With 3 bedrooms and 2.5 bathrooms, this home is perfect for your family! The entrance offers a closet and a space for you and your guests to put your coats and shoes. It then opens into the dining area with lots of bright windows. Across is the kitchen that has beautiful, stainless steel appliances. Throughout the main living area is gorgeous luxury vinyl plank flooring. Guests also have access to a convenient ½ bath on the main floor! Cozy carpet leads you upstairs where the 3 bedrooms are. Each room has lots of large windows where lots of natural sunlight beams through! The primary bedroom has its own en-suite (no worry about sharing with the kids or guests!) with DOUBLE SINKS, lots of drawers & storage, standalone shower, and a relaxing tub! The primary bedroom walk through closet offers lots of room for your clothes and storage! Down the hallway are 2 good-sized bedrooms with their own full, main bathroom.



### Essential Information

MLS® #	E4431200
Price	\$2,295
Bedrooms	3

Bathrooms	2.50
Full Baths	2
Half Baths	1
Square Footage	1,604
Acres	0.00
Type	Rental
Style	2 Storey
Status	Active

### Community Information

Address	556 35 Street
Area	Edmonton
Subdivision	Charlesworth
City	Edmonton
County	ALBERTA
Province	AB
Postal Code	T6X 1A5

### Amenities

Parking	Double Garage Detached
---------	------------------------

### Interior

Appliances	Dishwasher-Built-In, Dryer, Stove-Electric, Washer, Window
------------	--

### Additional Information

Date Listed	April 16th, 2025
Days on Market	14
Zoning	Zone 53

DATA IS DEEMED RELIABLE BUT IS NOT GUARANTEED ACCURATE BY THE REALTORS® ASSOCIATION OF EDMONTON. COPYRIGHT 2025 BY THE REALTORS® ASSOCIATION OF EDMONTON. ALL RIGHTS RESERVED. Trademarks are owned or controlled by the Canadian Real Estate Association (CREA) and identify real estate professionals who are members of CREA (REALTOR®, REALTORS®) and/or the quality of services they provide (MLS®, Multiple Listing Service®)

Listing information last updated on April 29th, 2025 at 11:02pm MDT

