

\$418,000 - 54109 Rge Rd 275, Rural Parkland County

MLS® #E4431346

\$418,000

0 Bedroom, 0.00 Bathroom,
Rural on 5.07 Acres

None, Rural Parkland County, AB

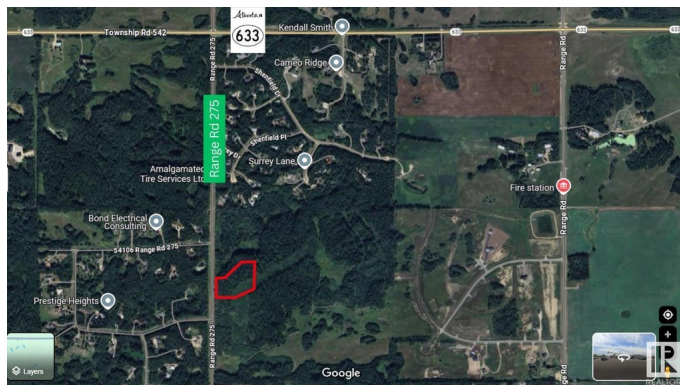
Lot 2 - Cozy and secluded, this treed 5.07+/- acre out of subdivision lot is perfect for country living. Tucked behind Lot 1, Lot 2 offers exceptional privacy with a lush treed buffer. With Country Residential zoning, the land is suitable for a variety of rural lifestyle needs- whether you're planning a family acreage, want space for small animals, or hope to build your dream home nestled in nature. Paved access just 20 minutes from St. Albert and Acheson, and only 30 minutes from Edmonton make this a hidden gem with both convenience and character. With gas and power at the property line.

Essential Information

MLS® #	E4431346
Price	\$418,000
Bathrooms	0.00
Acres	5.07
Type	Rural
Sub-Type	Vacant Lot/Land
Status	Active

Community Information

Address	54109 Rge Rd 275
Area	Rural Parkland County
Subdivision	None



City	Rural Parkland County
County	ALBERTA
Province	AB
Postal Code	T7X 3S4

Exterior

Exterior Features See Remarks

Additional Information

Date Listed	April 17th, 2025
Days on Market	12
Zoning	Zone 90

DATA IS DEEMED RELIABLE BUT IS NOT GUARANTEED ACCURATE BY THE REALTORS® ASSOCIATION OF EDMONTON. COPYRIGHT 2025 BY THE REALTORS® ASSOCIATION OF EDMONTON. ALL RIGHTS RESERVED. Trademarks are owned or controlled by the Canadian Real Estate Association (CREA) and identify real estate professionals who are members of CREA (REALTOR®, REALTORS®) and/or the quality of services they provide (MLS®, Multiple Listing Service®)

Listing information last updated on April 29th, 2025 at 1:32pm MDT