

\$765,000 - 54105 Rge Rd 275, Rural Parkland County

MLS® #E4431412

\$765,000

0 Bedroom, 0.00 Bathroom,
Rural on 89.55 Acres

None, Rural Parkland County, AB

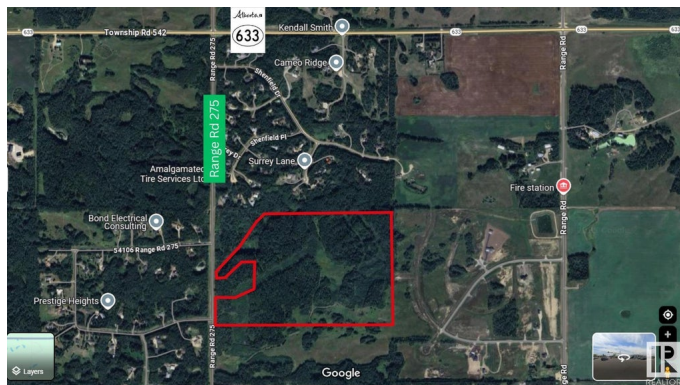
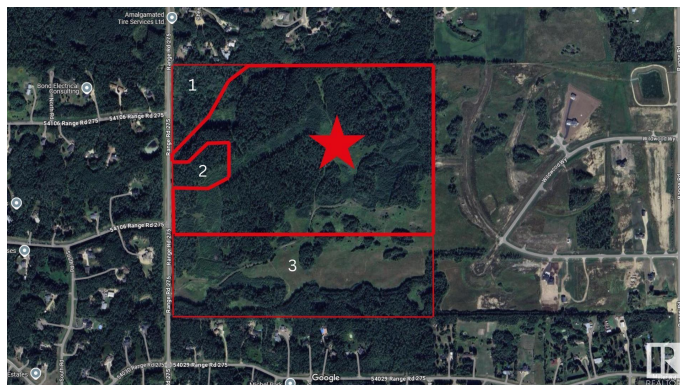
Nearly 90 acres of untouched nature with Country Residential zoning. Looking for maximum space and minimal restrictions? This rare offering includes RC zoning on a sprawling 89.55+/- acre lot filled with mature trees, rolling topography, and endless potential. Whether you are planning a forever home, looking to invest in rural land, or envision future possibilities, Lot 4 gives you the space and flexibility to make it happen-- all minutes from urban amenities in Spruce Grove, Stony Plain, Acheson, St. Albert, and Edmonton. Gas and power at the property line.

Essential Information

MLS® #	E4431412
Price	\$765,000
Bathrooms	0.00
Acres	89.55
Type	Rural
Sub-Type	Vacant Lot/Land
Status	Active

Community Information

Address	54105 Rge Rd 275
Area	Rural Parkland County
Subdivision	None
City	Rural Parkland County



County	ALBERTA
Province	AB
Postal Code	T7X 3S4

Exterior

Exterior Features See Remarks

Additional Information

Date Listed	April 17th, 2025
Days on Market	12
Zoning	Zone 90

DATA IS DEEMED RELIABLE BUT IS NOT GUARANTEED ACCURATE BY THE REALTORS® ASSOCIATION OF EDMONTON. COPYRIGHT 2025 BY THE REALTORS® ASSOCIATION OF EDMONTON. ALL RIGHTS RESERVED.Trademarks are owned or controlled by the Canadian Real Estate Association (CREA) and identify real estate professionals who are members of CREA (REALTOR®, REALTORS®) and/or the quality of services they provide (MLS®, Multiple Listing Service®)

Listing information last updated on April 29th, 2025 at 1:17pm MDT