

Courtesy Of Curtis D Stasiuk Of MaxWell Progressive

# \$399,900 - 7911 149a Avenue, Edmonton

MLS® #E4431644

**\$399,900**

4 Bedroom, 2.50 Bathroom, 1,270 sqft  
Single Family on 0.00 Acres

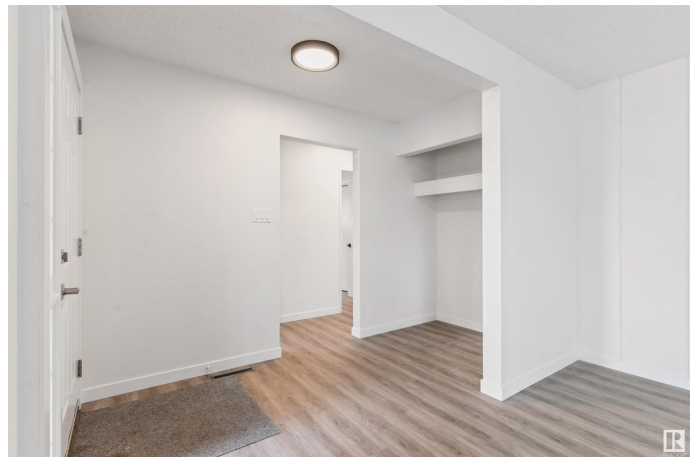
Kilkenny, Edmonton, AB

Welcome to this charming home, which has undergone significant updates. From the moment you walk in, you'll fall in love! The spacious living room has luxurious vinyl plank floors and a large picture window. The newly updated kitchen features timeless white cabinets, new stainless steel appliances, quartz countertops, a subway tile backsplash, and a separate dining area. Completing the main floor is a large primary bedroom with a renovated two-piece bath, two more spacious bedrooms, and a renovated four-piece bathroom. The renovated basement features a separate back entrance, a living room, a fourth bedroom, a renovated three-piece bath, laundry facilities, and ample storage space. Other Upgrades: Light Fixtures, Plush Carpet, Fresh Paint...The list is endless. The spacious, south-facing backyard features a double garage with a new garage door and is conveniently located close to schools, parks, public transit, and shopping. Move in + enjoy!

Built in 1969

## Essential Information

MLS® #	E4431644
Price	\$399,900
Bedrooms	4
Bathrooms	2.50



Full Baths	2
Half Baths	1
Square Footage	1,270
Acres	0.00
Year Built	1969
Type	Single Family
Sub-Type	Detached Single Family
Style	Bungalow
Status	Active

### **Community Information**

Address	7911 149a Avenue
Area	Edmonton
Subdivision	Kilkenny
City	Edmonton
County	ALBERTA
Province	AB
Postal Code	T5C 2X1

### **Amenities**

Amenities	Detectors Smoke
Parking	Double Garage Detached

### **Interior**

Interior Features	ensuite bathroom
Appliances	Dishwasher-Built-In, Dryer, Refrigerator, Stove-Electric, Washer - Energy Star
Heating	Forced Air-1, Natural Gas
Stories	2
Has Basement	Yes
Basement	Full, Finished

### **Exterior**

Exterior	Wood
Exterior Features	Back Lane, Fenced, Flat Site, Fruit Trees/Shrubs, Landscaped, Park/Reserve, Playground Nearby, Schools, Shopping Nearby
Roof	Asphalt Shingles
Construction	Wood
Foundation	Concrete Perimeter

## Additional Information

Date Listed April 18th, 2025

Days on Market 7

Zoning Zone 02

DATA IS DEEMED RELIABLE BUT IS NOT GUARANTEED ACCURATE BY THE REALTORS® ASSOCIATION OF EDMONTON. COPYRIGHT 2025 BY THE REALTORS® ASSOCIATION OF EDMONTON. ALL RIGHTS RESERVED. Trademarks are owned or controlled by the Canadian Real Estate Association (CREA) and identify real estate professionals who are members of CREA (REALTOR®, REALTORS®) and/or the quality of services they provide (MLS®, Multiple Listing Service®)

Listing information last updated on April 24th, 2025 at 9:47pm MDT