

\$1,195,000 - 126 26116a Hwy 16, Rural Parkland County

MLS® #E4432370

\$1,195,000

6 Bedroom, 4.50 Bathroom, 2,422 sqft

Rural on 0.50 Acres

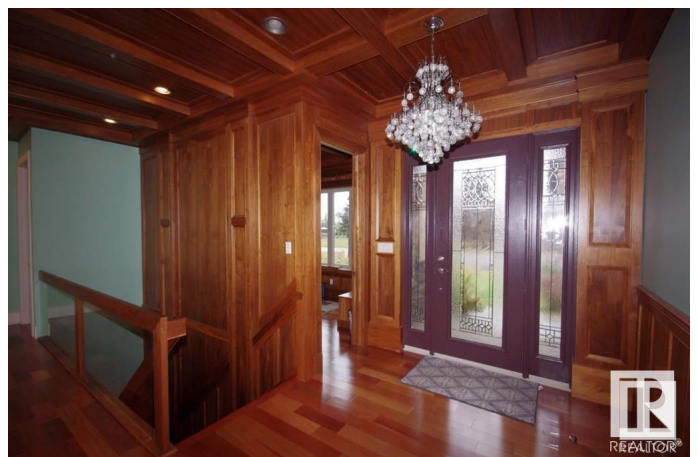
Country Estates, Rural Parkland County, AB

Superb !!! Amazing Huge Estate Bungalow w over 4800 sq ft of outstanding very spacious living space featuring Half Acre Lot, City water, sewer services in the perfect location Prestigious Country Estates at the West Edmonton City Boundry only 3 minutes to Anthony Henday. Major monies spent by Owner, Custom Built Beauty Bungalow, featuring mechanical upgrades such as infloor boiler heating + high eff forced air with air conditioning, 40 amp EV charger BMW Approved, hot, cold water in heated oversized triple att insulated garage, High ceilings thru, very large windows, so much more. Very expensive, gorgeous cherry hardwood floors on main, elegant walnut wood foyer, matching timeless stately main floor den with sophisticated built-ins. Three Very large Bedrooms, main floor, primary w walk in closet, spa ensuite, jetted tub. Chefs Dream Kitchen, gas cooktop, expansive gourmet fridge, wall oven, food warmer ... Large Lower level family rm, multiple bedrooms with ensuites main and lower, A Real Family Home !!!

Built in 2011

Essential Information

| | |
|--------|-------------|
| MLS® # | E4432370 |
| Price | \$1,195,000 |



| | |
|----------------|------------------------|
| Bedrooms | 6 |
| Bathrooms | 4.50 |
| Full Baths | 4 |
| Half Baths | 1 |
| Square Footage | 2,422 |
| Acres | 0.50 |
| Year Built | 2011 |
| Type | Rural |
| Sub-Type | Detached Single Family |
| Style | Bungalow |
| Status | Active |

Community Information

| | |
|-------------|-----------------------|
| Address | 126 26116a Hwy 16 |
| Area | Rural Parkland County |
| Subdivision | Country Estates |
| City | Rural Parkland County |
| County | ALBERTA |
| Province | AB |
| Postal Code | T7Y 1A1 |

Amenities

| | |
|----------------|-------------------------------------------------------------------------------------------------------------------------|
| Features | Deck, Detectors Smoke, No Animal Home, No Smoking Home, Patio, Sprinkler System-Fire, Vinyl Windows, Wall Unit-Built-In |
| Parking Spaces | 8 |

Interior

| | |
|-------------------|-------------------------------------------------|
| Interior Features | ensuite bathroom |
| Heating | Forced Air-1, In Floor Heat System, Natural Gas |
| Fireplace | Yes |
| Stories | 2 |
| Has Basement | Yes |
| Basement | Full, Finished |

Exterior

| | |
|-------------------|----------------------------------------------------------------------------------------------------------------------------------------------------------|
| Exterior | Wood |
| Exterior Features | Cul-De-Sac, Environmental Reserve, Flat Site, Fruit Trees/Shrubs, Golf Nearby, Landscaped, No Through Road, Park/Reserve, Playground Nearby, See Remarks |

| | |
|--------------|--------------------|
| Construction | Wood |
| Foundation | Concrete Perimeter |

Additional Information

| | |
|----------------|------------------|
| Date Listed | April 22nd, 2025 |
| Days on Market | 7 |
| Zoning | Zone 70 |

DATA IS DEEMED RELIABLE BUT IS NOT GUARANTEED ACCURATE BY THE REALTORS® ASSOCIATION OF EDMONTON. COPYRIGHT 2025 BY THE REALTORS® ASSOCIATION OF EDMONTON. ALL RIGHTS RESERVED.Trademarks are owned or controlled by the Canadian Real Estate Association (CREA) and identify real estate professionals who are members of CREA (REALTOR®, REALTORS®) and/or the quality of services they provide (MLS®, Multiple Listing Service®)

Listing information last updated on April 29th, 2025 at 11:02am MDT