

\$435,000 - 545 175a Street, Edmonton

MLS® #E4432768

\$435,000

3 Bedroom, 3.00 Bathroom, 1,318 sqft
Single Family on 0.00 Acres

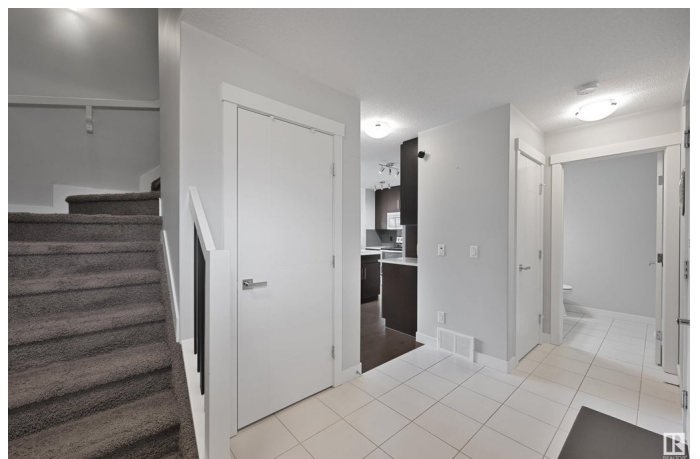
Windermere, Edmonton, AB

Incredible Coventry built half duplex in desirable Windermere location. This property offers 3 bedrooms, 2 full bathrooms, 2 half baths and a fully finished basement. Located steps away from green space and a quick drive away from all amenities. The main floor offers beautiful hardwood floors, quartz countertops, stainless steel appliances and a corner natural gas fireplace. The yard is professionally sprayed and maintained every year. The oversized single attached garage fits most vehicles, measuring 15' x 23'.

Built in 2014

Essential Information

MLS® #	E4432768
Price	\$435,000
Bedrooms	3
Bathrooms	3.00
Full Baths	2
Half Baths	2
Square Footage	1,318
Acres	0.00
Year Built	2014
Type	Single Family
Sub-Type	Half Duplex
Style	2 Storey
Status	Active



Community Information

Address	545 175a Street
Area	Edmonton
Subdivision	Windermere
City	Edmonton
County	ALBERTA
Province	AB
Postal Code	T6W 2L3

Amenities

Amenities	Ceiling 9 ft., Deck, Detectors Smoke, No Animal Home, No Smoking Home, Vinyl Windows
Parking	Over Sized, Single Garage Attached

Interior

Interior Features	ensuite bathroom
Appliances	Dishwasher-Built-In, Dryer, Garage Control, Garage Opener, Microwave Hood Fan, Refrigerator, Stove-Electric, Washer
Heating	Forced Air-1, Electric
Fireplace	Yes
Fireplaces	Corner, Mantel
Stories	3
Has Basement	Yes
Basement	Full, Finished

Exterior

Exterior	Wood, Vinyl
Exterior Features	Fenced, Flat Site, Golf Nearby, Low Maintenance Landscape, Playground Nearby, Public Transportation, Schools, Shopping Nearby
Roof	Asphalt Shingles
Construction	Wood, Vinyl
Foundation	Concrete Perimeter

School Information

Elementary	Constable Daniel Woodall
Middle	Joey Moss School
High	Lillian Osborne School

Additional Information

Date Listed	April 25th, 2025
-------------	------------------

Days on Market 3

Zoning Zone 56

DATA IS DEEMED RELIABLE BUT IS NOT GUARANTEED ACCURATE BY THE REALTORS® ASSOCIATION OF EDMONTON. COPYRIGHT 2025 BY THE REALTORS® ASSOCIATION OF EDMONTON. ALL RIGHTS RESERVED. Trademarks are owned or controlled by the Canadian Real Estate Association (CREA) and identify real estate professionals who are members of CREA (REALTOR®, REALTORS®) and/or the quality of services they provide (MLS®, Multiple Listing Service®)

Listing information last updated on April 28th, 2025 at 7:02am MDT