

Courtesy Of Daniel N Garth Of Garth Realty Group Inc.

## \$669,990 - 15 Heron Crescent, Spruce Grove

MLS® #E4433000

**\$669,990**

5 Bedroom, 3.50 Bathroom, 2,311 sqft

Single Family on 0.00 Acres

Harvest Ridge, Spruce Grove, AB

Situated on a quiet crescent and MASSIVE pie lot with NO REAR NEIGHBOURS! Overloaded with convenience, this 5 BED + 4 BATH home is immaculate & provides incredible value in both location & design. With over 2,300 SqFt of living space, this house is perfect for the new or growing family. Walk through the front door to towering ceilings, hardwood floors, expansive open concept living room + chef's dream kitchen w/ granite countertops, ample cabinetry & sizeable pantry. The walkout deck with pergola leads to an INCREDIBLE BACKYARD. Massive, pie-shaped, expertly landscaped backyard is complete with HOT TUB, raised garden beds, large shed & a kids play structure. Back inside, upstairs features BONUS ROOM, 3 large beds + family room; primary suite is a quiet oasis with 5 pc ensuite & walk-in closet. Fully finished basement is epic with sound insulated rec room, a full bath + 2 more beds! Double oversized garage. A perfectly situated home close to all amenities. Experience Spruce Grove living at its finest.

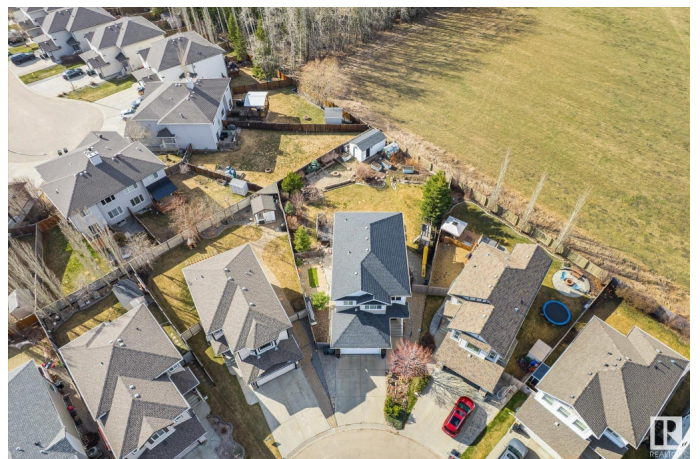
Built in 2009

### Essential Information

MLS® # E4433000

Price \$669,990

Bedrooms 5



Bathrooms	3.50
Full Baths	3
Half Baths	1
Square Footage	2,311
Acres	0.00
Year Built	2009
Type	Single Family
Sub-Type	Detached Single Family
Style	2 Storey
Status	Active

### **Community Information**

Address	15 Heron Crescent
Area	Spruce Grove
Subdivision	Harvest Ridge
City	Spruce Grove
County	ALBERTA
Province	AB
Postal Code	T7X 0E9

### **Amenities**

Amenities	Ceiling 9 ft., Deck, Gazebo, Hot Tub, Hot Water Natural Gas, No Smoking Home, Parking-Extra, Vinyl Windows, See Remarks
Parking	Double Garage Attached, See Remarks

### **Interior**

Interior Features	ensuite bathroom
Appliances	Dishwasher-Built-In, Dryer, Garage Opener, Hood Fan, Refrigerator, Storage Shed, Stove-Gas, Washer, Window Coverings, Hot Tub
Heating	Forced Air-1, Natural Gas
Fireplace	Yes
Fireplaces	Corner, Tile Surround
Stories	3
Has Basement	Yes
Basement	Full, Finished

### **Exterior**

Exterior	Wood, Stone, Vinyl
Exterior Features	Backs Onto Park/Trees, Fenced, Fruit Trees/Shrubs, Golf Nearby,

Landscaped, Playground Nearby, Private Setting, Public Transportation, Schools, Shopping Nearby, Vegetable Garden, See Remarks

Roof Asphalt Shingles  
Construction Wood, Stone, Vinyl  
Foundation Concrete Perimeter

### **Additional Information**

Date Listed April 26th, 2025  
Days on Market 2  
Zoning Zone 91

DATA IS DEEMED RELIABLE BUT IS NOT GUARANTEED ACCURATE BY THE REALTORS® ASSOCIATION OF EDMONTON. COPYRIGHT 2025 BY THE REALTORS® ASSOCIATION OF EDMONTON. ALL RIGHTS RESERVED. Trademarks are owned or controlled by the Canadian Real Estate Association (CREA) and identify real estate professionals who are members of CREA (REALTOR®, REALTORS®) and/or the quality of services they provide (MLS®, Multiple Listing Service®)

Listing information last updated on April 28th, 2025 at 6:32pm MDT